

I. Omega West Planning Area

1. General Description

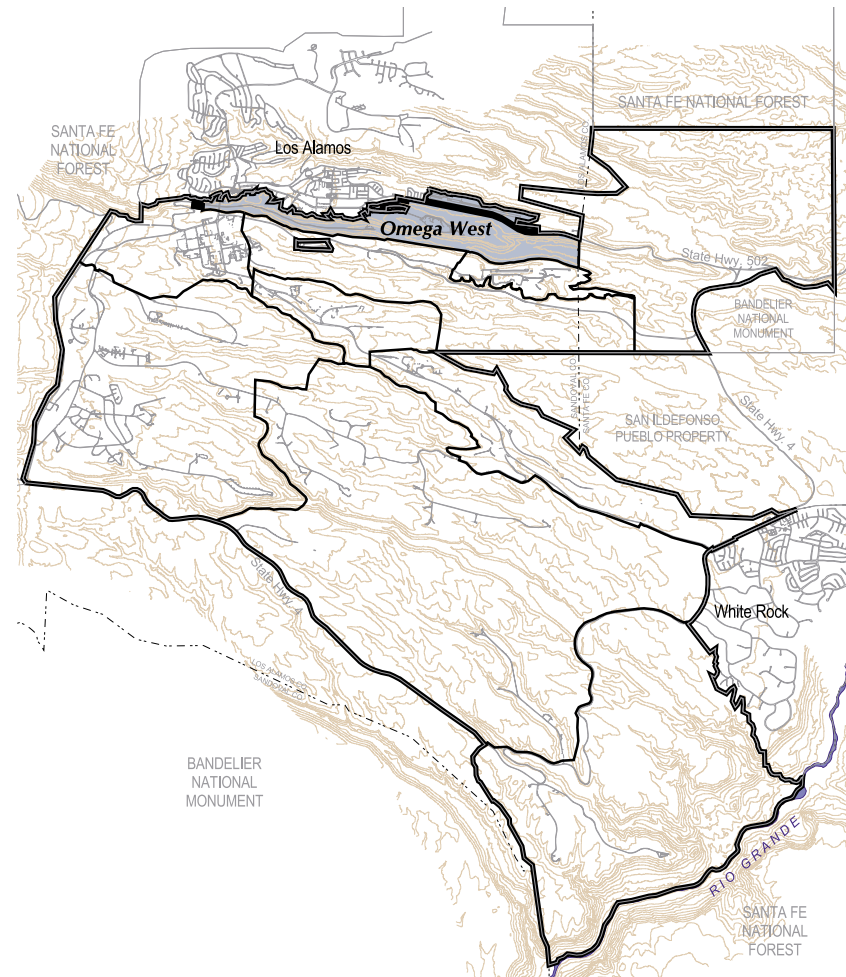
The Omega West Planning Area covers 1.6 square miles. The western half of the area incorporates the bottom of Los Alamos Canyon and some limited developable areas along the north rim of the canyon. The Los Alamos town site abuts the northern boundary. The eastern half includes the eastern portion of Los Alamos Canyon and two mesas to the north that correspond with TAs-21 and -73. The western half of the planning area is composed of TAs-02, -41 and -43.

The Omega West Planning Area is primarily reserve land. Other uses within the planning area are administration, experimental science, nuclear materials R&D and waste management. The Los Alamos County Airport lies within the planning area boundaries but is not considered part of this area for planning purposes.

The following assumptions will guide the physical planning of the Omega West Planning Area for the next 10 years:

- *All current Laboratory uses in the Omega West Planning Area are to be removed or replaced by facilities in other locations of the Laboratory. This is part of a consolidation strategy to move all Laboratory functions to locations south of Los Alamos Canyon.*
- *The long term intended use of the Omega West Planning Area is land transfer or reserve.*

Map VI-11: Omega West Planning Area Key Map



2. *Opportunities and Constraints*

The following opportunities and constraints affect physical planning in the Omega West Planning Area.

Physical Constraints

Los Alamos Canyon covers most of the western half of the Omega West Planning Area. The canyon then extends south of TA-21 in the eastern half of the planning area. Development within the planning area is severely limited by steep slopes. There is a 100-year floodplain within Los Alamos Canyon, as well as federally protected species habitat. This habitat also includes the lands immediately adjacent to the canyon. There are isolated wetlands in the planning area. A number of existing facilities are located in the canyon bottom. Further development is discouraged in these environmentally sensitive areas.

Operational Constraints

The Los Alamos town site borders this planning area on the north. Within the town site is TA-43, the Health Research Laboratory (HRL), a program funded by the Office of Biological and Environmental Research. Low-hazard chemical, radiological, and toxic materials are stored on-site. In addition, limited low-level nuclear activity is conducted within these facilities.

The program has outgrown its location, and a replacement facility is needed. Because of the safety hazards, any replacement facility should be sited away from community areas. Operational efficiencies would improve if new facilities were located near T, P, CST, and NIST programs. Much of the HRL life sciences activity supports the CMR program. Remediation for Cesium 137 and Cobalt 60 and a small amount of contaminated shielding must be completed before HRL building 20 is reused.

Within the Omega West Planning Area are three identified radiation sources and associated SAR areas, hazardous waste pipelines, solid waste and hazardous waste landfills.

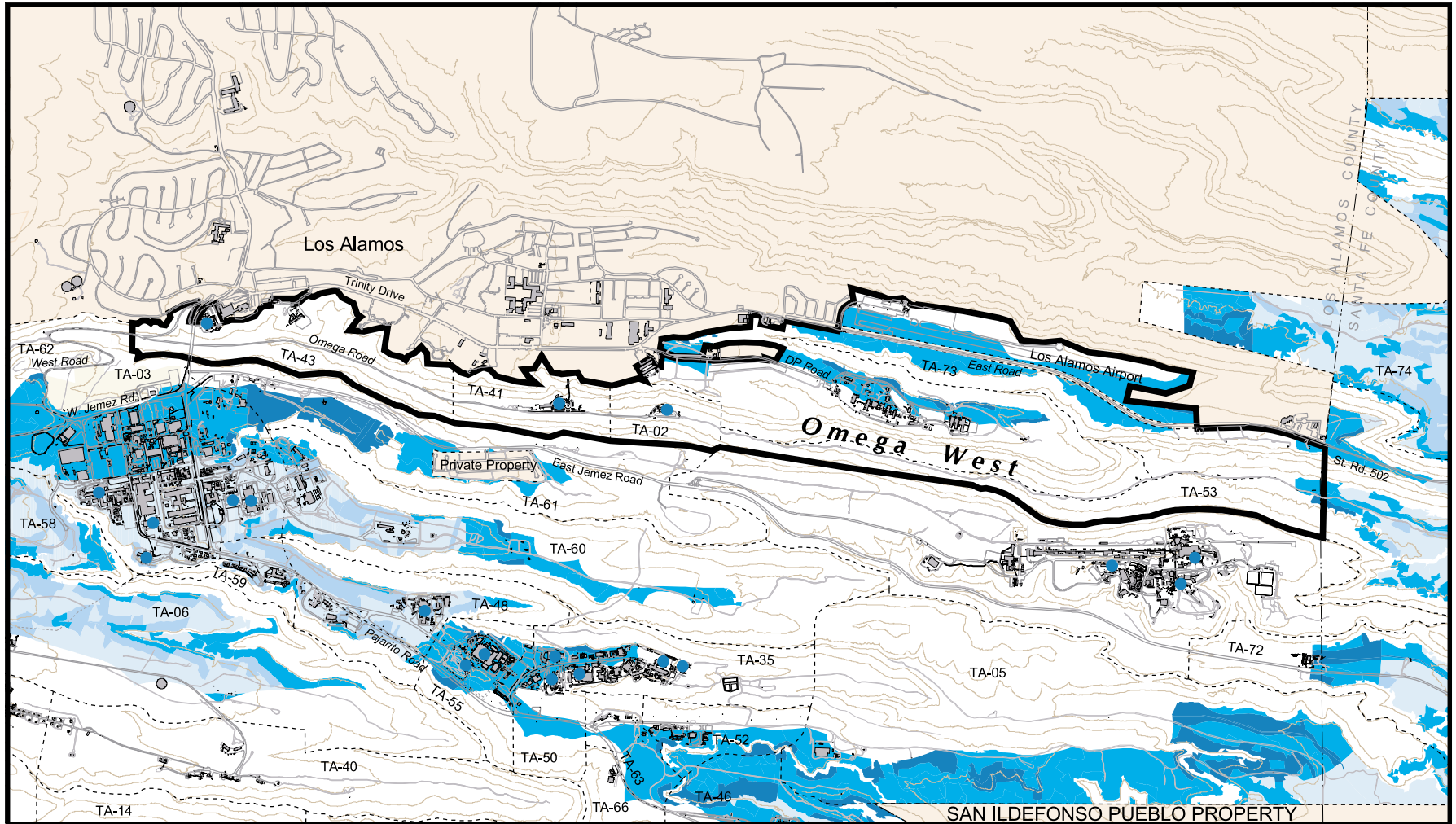
TAs-02 and -41 do not have any expansion space. Future functions here are constrained by poor access, relative isolation, and close proximity to privately owned land on the mesa top to the north. TA-43 also has no expansion space.

The Los Alamos County Airport is located in TA-73 and is part of the DOE land transfer package under consideration.

Development Opportunities

The Laboratory has decided that no new future construction of major Laboratory facilities will happen in the Omega West Planning Area.

Map VI-12: Omega West Planning Area Development Opportunities Map



LEGEND

- Technical Area Boundary
- Non Dept. of Energy Property
- █** Planning Area
- Unique Operational and/or Physical Considerations Exist
- Excellent Development Potential
- Good Development Potential
- Fair Development Potential
- Poor Development Potential
- Radiation Source

Areas of one acre or less are incorporated into the surrounding larger areas.



3. *Projects for Omega West Planning Area*

Proposed, planned or budgeted projects noted below and on the facing summary map, VI-I3, for this planning area were identified through Laboratory documents or by stakeholders during the Comprehensive Site Plan 2000 process. The symbol *NS* stands for project “Not shown” on the summary map.

Consolidate Laboratory Functions

- ① Proposed closure of TA-21 and relocation of activities to another Laboratory location.
- ② Planned demolition of Omega West Reactor.
- ③ Proposed long-term decontamination and demolition of remaining facilities in TA-02 and TA-41.
- ④ Proposed consolidation of laboratory archives to central storage location at TA-03.
- ⑤ Planned move of shop functions to JCNNM consolidation site at Sigma Mesa.
- ⑥ Proposed long term decontamination and demolition of archives and SCNNM facilities in TA-21
- ⑦ Proposed consolidation of TA-21 WETF functions to TA-16 WETF site.
- ⑧ Proposed land transfer of portions of TAs-02, -21, and -43.
- ⑨ Planned relocation of Bioscience activities to the Core Planning Area. Possible reuse of the CMR Building at TA-03.

Transportation Development

- ⑩ Proposed second bridge across Los Alamos Canyon to reduce regional traffic through TA-03.

Infrastructure Revitalization

- NS* Ongoing utility revitalization activities as noted in Site Wide Planning Area section.
- ⑪ Planned slip-lining of existing natural gas 10-in. steel line for leak repair.
 - ⑫ Proposed upsizing of existing natural gas Tech Meter 3 to improve utility redundancy for Laboratory gas distribution system.

ESH Efforts

- ⑬ Proposed cleanup of contaminated buildings at TA-21.

Quality Environment Enhancement

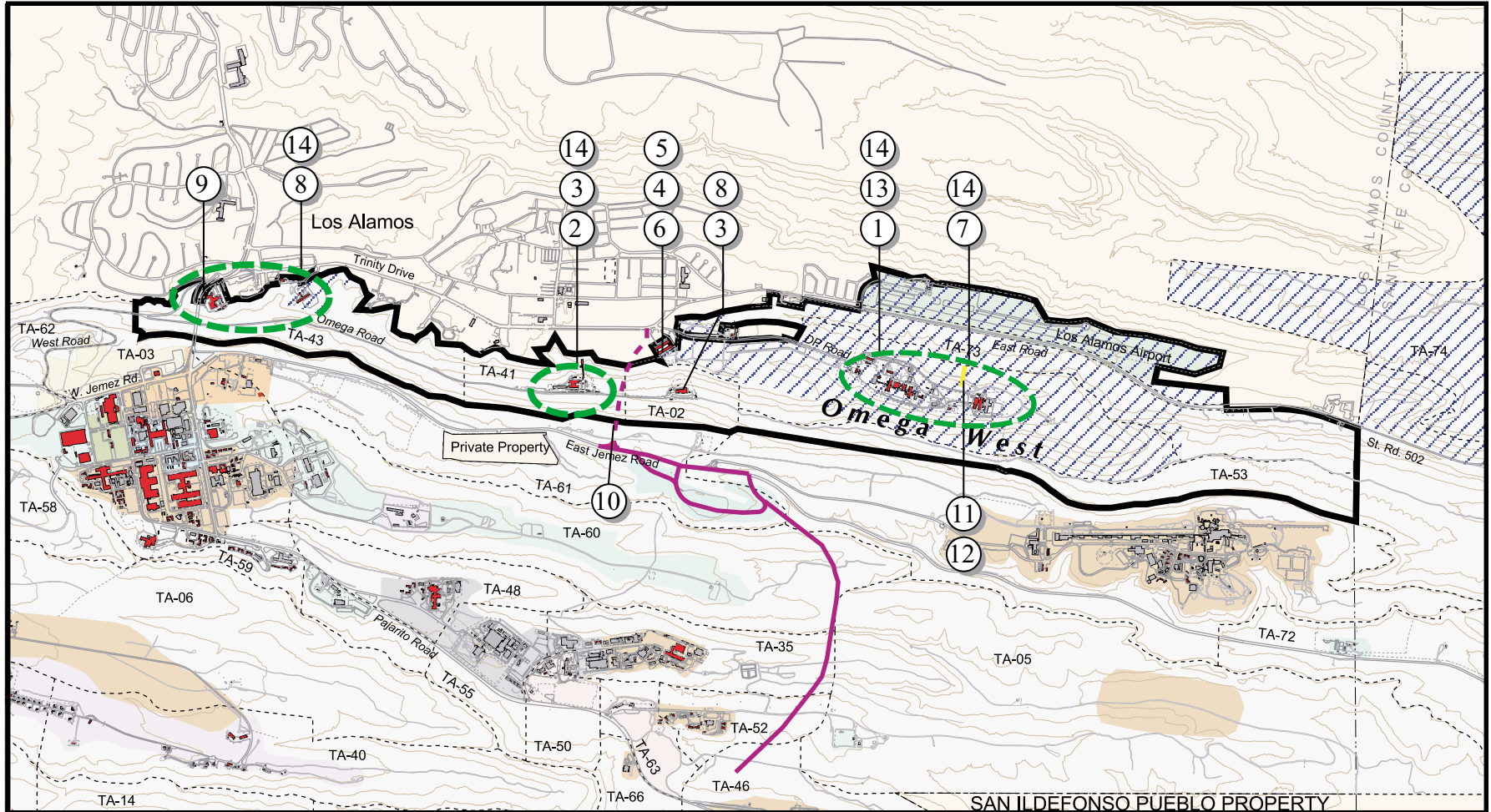
- ⑭ Revegetate sites in TAs-02, -21, -41 and -43 as facilities are closed or removed.

CSP 2000 Issues for Omega West Planning Area

Important issues that need discussion for continued refinement of the CSP for this planning area:

- *Identify general timeline and process to close facilities in the Omega West Planning Area.*
- *Determine possibility of Bioscience activities reusing CMR Building at TA-03 or identify other potential options at TA-03.*
- *Identify the level of continuing upgrades or repairs to be done to facilities being closed in the planning area.*

Map VI-13: Omega West Planning Area Summary Map



LEGEND

Administration	Public/Corporate Interface	Fair or Poor Buildings
Airfield	Research Park	Area of Interest
Experimental Science	Reserve	Gas Pipeline
High Explosives R&D	Theoretical/Computational Science	Long Range New or Improved Roads
Non-DOE Property	Waste Management	New or Improved Roads
Nuclear Materials R&D	Land Transfer Tracts	
Physical/Technical Support	Planning Area	

